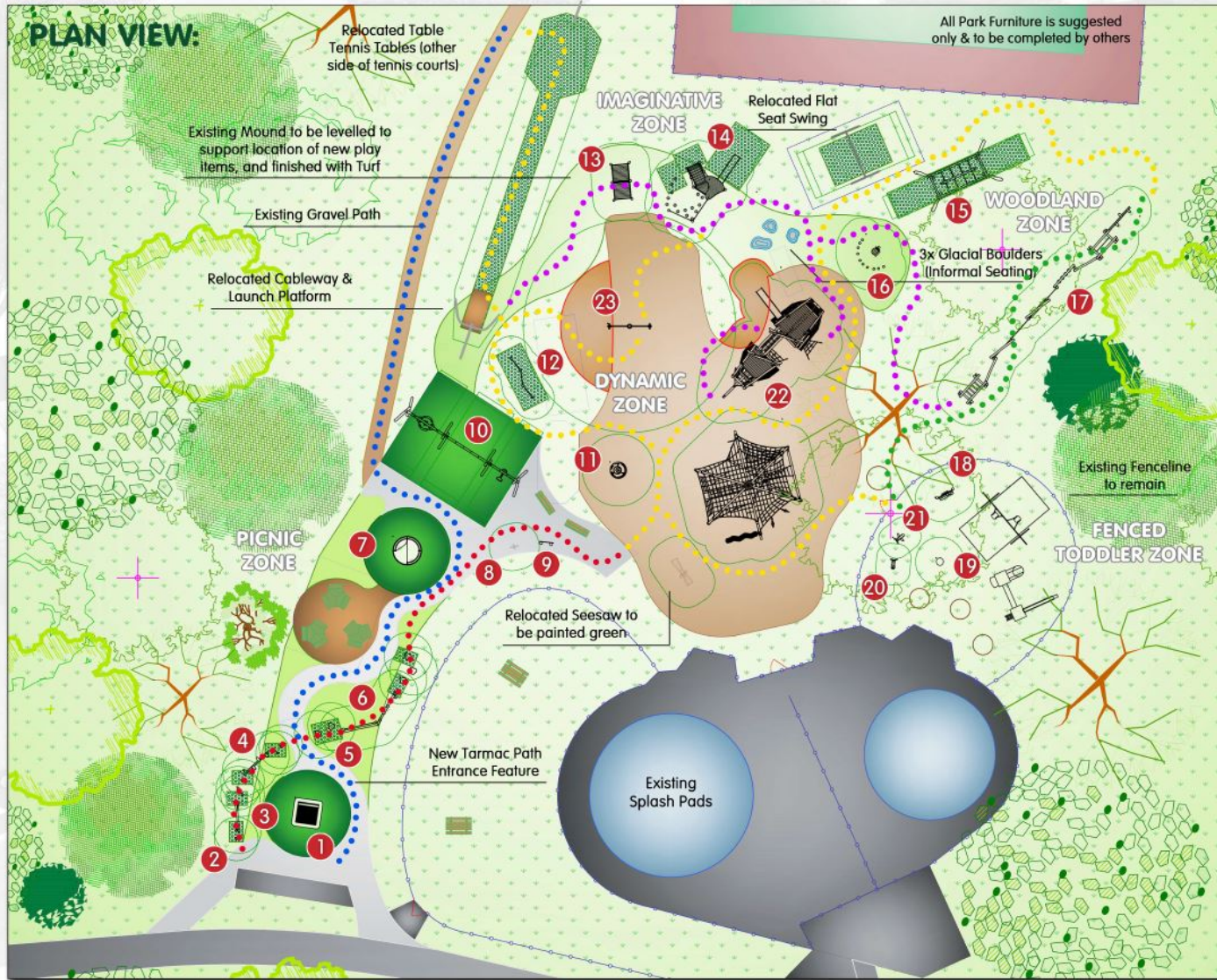


Cambridge City Council has been given Section 106 developer contribution money and is proposing to improve the play equipment in the Cherry Hinton Hall play area. We propose to utilise the look of the heavily tree populated area to install timber equipment that is both robust and aesthetically pleasing. This equipment will provide dynamic play for the age ranges of 0-14 years and will provide inclusive play for all levels of ability. The improved play area will slightly alter the shape of the existing play area footprint but will not impinge on the existing grass open space.

The play area will be aimed at the age range of 0-14 years. Safety surfacing will conform to BS EN 1177 safety standards. Areas of the open space will remain for informal play and leisure with the new area complimenting existing play equipment.

We would like to use this consultation to present an initial design to residents in order to gauge support and to seek further comments should residents wish to see other changes to the space as part of any potential longer term redevelopment of Cherry Hinton Hall.

Please email parks@cambridge.gov.uk giving us your feedback and suggestions.



Cherry Hinton Hall

Cambridge City Council

PLAY SEQUENCE ROUTES:

- Playful Route
- Formal Access Route
- Dynamic Route
- Imaginative Route
- Woodland Route

Product Key:

- | | |
|---|--|
| 1. Inclusive Jumper | 13. Theatre Stage |
| 2. Sleeping Post (nd) | 14. Playset with Stairway |
| 3. Rope Bridge | 15. Corowave Pendulum Swing |
| 4. Balance Plus | 16. Fairytale Throne with 10x Post Seats |
| 5. Balancepost Waterlilies (x5) | 17. Agility Trail 6 |
| 6. Balance Combobblers | 18. Dressing Up Wall with Mirror |
| 7. Inclusive Roundabout | 19. Spinner Bowl |
| 8. Shake, Rattle & Roll Panel | 20. Snail Springer |
| 9. Cam Chimes Panel | 21. Bee Springer |
| 10. Three Bay Swing with 1x Shell, 2x Boat and 1x You & Me Seat | 22. Medium Pirate Ship |
| 11. Tipt Carousel with Top Brace | 23. Solium Carousel (from client stock) |
| 12. Triple Somersault Bars | |

Surfacing Key:

- | | |
|---------------|------------------------|
| Existing Bark | New Bonded Mulch Green |
| New Bark | New Bonded Mulch Brown |
| New Grass Mat | New Tarmac Overlay |
| New Turf | Existing Tarmac |



KOMPAN
Let's play

NRO540: Pirate Ship



Climb the Ship!

Climb high above all the activity below... reach for the sky. Climbing cleats on the side of the ship encourage upperbody strength and contains an element of challenge and risk.

Holds MORE
than 30 Children!



Cherry Hinton Hall
Cambridge City Council

Peekaboo Windows

Whether your staring out to sea or holding captured pirates, below deck you have a series of windows enabling children to experience layered or simply take some time out from the play around them.



Cannons

Defend your ship from the pirates up ahead! Fire the cannons, their after your ship and all the treasure aboard!



Masts & Sails
Tactile Panels

Lookout
Platforms

Different Access Points!

Multi-Level
Angled & Upright Net
Focal Point

Bow Platform

Cannons
Transparent Play
2x Binoculars
Durable

Ladder Climb Inside

Rope Bridge

Binoculars x2

Role play at its best. The Explorer Ship has set sail, look out through the binoculars on the upper deck. Can you spot the islands that lay in the distance ahead!



Walk the Plank!

Walk or run, the choice is yours... use your skills to balance, as the rope bridge wobbles back and forth as you make your way across!



Slide

Handles



Wheel



Cleats

Bow Net

Climb
Wall

Layered play that
encourages social
interaction!

Balancing
Rope Bridge Walk

Upright
Nets

Other Colour
Combinations Available

The Pirate ship is a magnet for children's play, attracting play again and again with its immensely varied play offering, above and below deck. The boarding options are endless, with planks that can be climbed vertically, nets and climbing cleats. This all trains children's cross-coordination and muscles. The many manipulative activities, binoculars, cannons, the wheel stimulate dexterity and fine motor skills and inspire hours of dramatic play.

Apart from being great fun, it supports children's cognitive development and social-emotional skills. In addition to dramatic play, children develop their physical skills. Once up on deck, the children can take more ways across or down. The slide tickles the stomach and adds thrill. Additionally, it trains children's sense of space. Pirate play has developmental benefits in the ship.

KOMPAN
Let's play

